

Social Enterprise
And
Community Economic
Development (CED)

Thrive

Who is Thrive
And
What do we do?

Thrive

Why Social Enterprise?

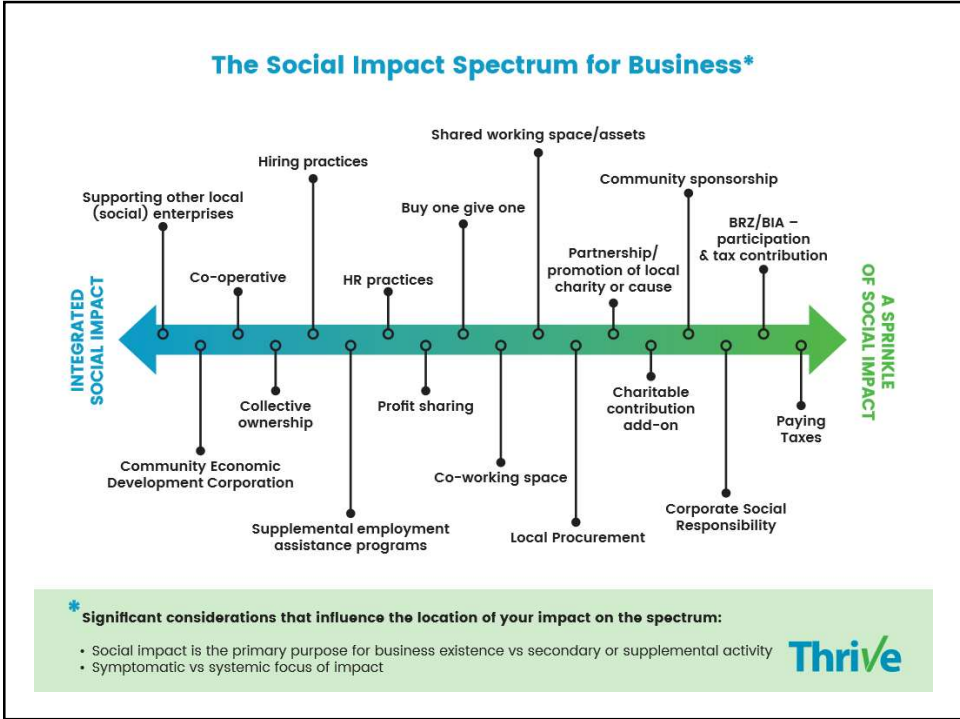
What's the purpose?

Thrive

What is Social Enterprise?

What is Community
Economic Development
(CED)?

Thrive



Benefits of Socent?

Challenges of Socent?

Thrive

Idea Generating time!!!

Thrive

Next Steps?

- Ask yourself Why you are wanting to start a social business (go through handout)
- Identify a social impact you would like to address
- See what's already been done in the city, and by who and see if you can partner
- Contact someone to help you (see next slide and handout)
- Write a business plan or complete a Business Model Canvas (see handout)
- **Do it!!!**

Thrive

Who can help you?

(in no apparent order)

Mount Royal - Institute for Community Prosperity
<http://www.mtroyal.ca/nonprofit/InstituteforCommunityProsperity/Community/SocialInnovationHub/index.htm> (social innovation hub and university courses)

Thrive Calgary <http://thrivecalgary.org/> (social business accelerator and social enterprise training)

Trico Foundation <https://tricofoundation.ca/> (training, and grants for CRA qualified donees only)

Changemakers Association <https://changemakersassociation.com>

The Sedge <http://www.thesedge.org> (focused on private sector entrepreneurs)

Social Enterprise Fund <http://socialenterprisefund.ca/> (loans to social enterprise)

Innovate Calgary <http://www.innovatecalgary.com/files/public-files/programs-cat-link/rbc-social-enterprise-accelerator-may2017.pdf> (accelerator program for selected social enterprises)

ATB Financial <http://www.atb.com/business/experts/Pages/ATB-Social-Enterprise.aspx> (Loans and Grant)

The logo for Thrive, featuring the word "Thrive" in a blue, sans-serif font. The letter "i" is stylized with a green checkmark-like shape above it.